



# Inclusion

News from New Haven Farm Home

A U T U M N 2 0 2 6





# A NOTE FROM THE CEO

Dear Families and Friends

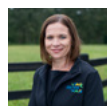
Welcome to the latest edition of Inclusion. We always enjoy the opportunity to share updates, highlights, and activities from across New Haven Farm Home, and we hope you enjoy receiving this insight into our organisation and community.

I would like to take this opportunity to reflect on what has been a productive and positive period for New Haven Farm Home. Over the past quarter, our services have continued to evolve in response to the changing needs of the people we support. As always, our focus remains on delivering high-quality, individualised support that promotes independence, wellbeing, and quality of life.

This edition of Inclusion has been brought together by our newest team member, Brooke, who has recently commenced in the role of HR Assistant. We are pleased to welcome Brooke to New Haven Farm Home and thank her for her work in preparing this newsletter.

This quarter has also provided valuable opportunities to connect with families, stakeholders, and the broader community. Whether through events, visits, or ongoing feedback, these connections are important in ensuring we remain responsive, transparent, and aligned with the needs and expectations of those we support.

I would like to sincerely thank our families, partners, and stakeholders for your continued support and engagement. Your trust plays a critical role in enabling us to deliver strong and sustainable services.



Best wishes,  
**Annette Allen**

# SECTOR UPDATE

The disability sector continues to undergo significant reform, with a strong national focus on improving sustainability, strengthening safeguards, and ensuring the Scheme delivers consistent outcomes for participants.

## NDIS REFORM – WHAT IS CHANGING

Recent legislative and policy changes are part of a broader reform program designed to ensure the long-term sustainability and integrity of the NDIS.

Key areas of reform include:

- Stronger regulation and safeguarding:**  
 New legislation passed in April 2026 strengthens the powers of the NDIS Quality and Safeguards Commission, with a particular focus on improving provider oversight and protecting participants
- Tighter provider requirements:**  
 Mandatory registration requirements are expanding, including for Supported Independent Living (SIL) providers from July 2026, increasing compliance expectations across the sector
- Changes to planning and funding models:**  
 The NDIS is moving toward a more structured planning approach, including the introduction of standardised support needs assessments from 2027 to create more consistent and equitable participant budgets
- Improved financial controls and fraud prevention:**  
 Reforms include enhanced payment systems and greater visibility over claims,

aiming to reduce misuse and strengthen financial accountability across the Scheme

- Clarification of funding responsibilities and access:**  
 Changes are being implemented to provide clearer guidance on what supports are funded under the NDIS versus mainstream systems, as well as more consistent access and eligibility decisions

These reforms are being introduced progressively and are expected to reshape how services are delivered, funded, and regulated over the coming years.

## NDIS BY THE NUMBERS

The scale of the NDIS continues to grow:

- As of December 2025, the Scheme supports over 761,000 participants nationally, highlighting its significance as one of Australia’s largest social support programs

This continued growth reinforces the importance of ensuring the Scheme remains sustainable while maintaining quality outcomes for participants.

## PORTABLE LONG SERVICE LEAVE (NSW COMMUNITY SERVICES SECTOR)

From 1 July 2025, a significant workforce reform was introduced through the Portable Long Service Leave Scheme for the community services sector in NSW.

Key features include:

- **Industry-based entitlement:**  
Workers accrue long service leave based on time in the sector, rather than with a single employer
- **Retention of entitlements across employers:**  
Leave accrues even when employees move between organisations, supporting a highly mobile workforce
- **Eligibility after 7 years:**  
Workers can access up to 6 weeks of paid leave after 7 years of service across the industry
- **Employer contributions:**  
Organisations are required to register and contribute to the scheme via a levy paid to the Long Service Corporation

This reform aims to improve workforce retention and recognise long-term service in a sector where employees often move between providers.

### WORKERS COMPENSATION REFORM (NSW)

The NSW workers compensation system is also undergoing significant reform, with a particular focus on sustainability and the management of psychological injury claims

Key themes include:

- **Greater focus on prevention and early intervention:**  
The proposed reforms aim to shift the system from primarily compensating injuries to actively preventing harm and supporting earlier return to work
- **Changes to psychological injury claims:**  
Legislative changes introduce clearer

definitions of psychological injury, including specific criteria for when claims are eligible and how they are assessed

- **Stronger regulation and clearer processes:**  
Reforms seek to reduce complexity, improve consistency, and strengthen oversight within the system
- **Focus on scheme sustainability:**  
Rising costs—particularly related to psychological injury claims—have been a key driver of reform, with changes aimed at maintaining affordability for employers while supporting injured workers

These changes are expected to continue evolving as legislation progresses and implementation is finalised.

### WHAT THIS MEANS:

Across all of these areas, the sector is moving toward:

- Increased regulation and accountability
- Greater consistency in funding and service delivery
- A stronger focus on workforce sustainability and retention

New Haven Farm Home continues to actively monitor these developments to ensure we remain compliant, responsive, and well-positioned to deliver high-quality services into the future.

# RESERVE ROAD

As the leaves begin to turn and the mornings grow a little cooler, we've embraced the change of season here at Reserve Road. Autumn has brought with it a lovely mix of community connection, meaningful moments, and the simple comforts that make this time of year so enjoyable.

## EASTER CELEBRATIONS AT THE FARM

One of the highlights this season was our Easter Family Event held at The Farm. It was fantastic to welcome families and loved ones into our space, creating an opportunity for everyone to come together, connect, and celebrate.

The day was filled with laughter, shared meals, and of course, a bit of Easter fun. Seeing residents spending quality time with family in a relaxed and familiar setting was incredibly special. Events like these are such a valuable reminder of the strong community we're building together and the importance of maintaining those meaningful connections.



DAVE AT THE HAWKESBURY SHOW

## OUT AND ABOUT AT THE HAWKESBURY SHOW

We also enjoyed a great outing to the Hawkesbury Show. For many of our residents, this was a chance to get back into the heart of the local community and take part in a well-loved regional tradition.

From exploring the stalls and exhibits to enjoying the atmosphere and excitement of the day, it was wonderful to see residents engaging in activities that sparked interest and enjoyment. Opportunities like this support not only social connection but also confidence and independence within the wider community.

## CONTINUING TO BUILD INDEPENDENCE

At Reserve Road, we remain focused on encouraging and supporting each person to build on their independence in ways that are meaningful to them.

This can look different for everyone, whether it's making day-to-day choices, participating in household routines, developing new skills, or getting involved in community activities. We're proud to see residents continuing to grow in confidence and capability, with staff supporting in a way that promotes autonomy while ensuring safety and wellbeing.

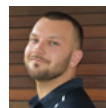
## AUTUMN COMFORTS

With the cooler weather settling in, many of our residents are truly in their element. There's been a noticeable shift towards quieter, cosy moments—enjoying a hot cup of tea or coffee, relaxing indoors, and embracing the slower pace that autumn can bring.



These simple routines have become a comforting part of daily life, creating space for connection, conversation, and relaxation.

As always, we're grateful for the ongoing support from families, friends, and our wider community. We look forward to the months ahead and continuing to create meaningful experiences together.



**Finn Cooper**  
Site Manager





COLIN ON THE FERRIS WHEEL AT THE HAWKESBURY SHOW

## BOSWORTH STREET

Over the past few months, residents at Bosworth Street have continued to make great progress in building independence, strengthening routines, and staying actively connected within their community.

A strong focus has been placed on meaningful engagement, with residents participating in a wide range of activities

aligned to their individual interests and goals. These have included supported employment, structured day programs such as Thorndale, Bridges, NADO, and Secret Garden, as well as community outings like shopping, banking, social visits, and recreational activities.

It has been particularly encouraging to see individuals maintaining consistent routines and increasing their confidence in everyday tasks, contributing to a greater sense of independence and achievement.

Recent highlights have included Easter celebrations, outings to events such as the Hawkesbury Show, and individual birthday celebrations, providing opportunities for enjoyment, social connection, and shared experiences.



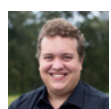
JOHN AND PAUL AT DAY PROGRAM

Health and wellbeing also continue to be a priority across the site. Residents have attended regular GP appointments, allied health supports, and preventative care services such as podiatry and vaccination appointments. Health and wellbeing also continue to be a priority across the site. Residents have attended regular GP appointments, allied health supports, and preventative care services such as podiatry and vaccination appointments. Staff have been supporting individuals to maintain positive daily routines, including personal care and hygiene, with strong outcomes being observed.

Maintaining meaningful connections with family and the broader community remains central to life at Bosworth Street. Residents have enjoyed visits with family, social outings, and community-based experiences, all of which contribute to overall wellbeing and a sense of belonging.

Gareth visited his parents at Port Macquarie in April/May, whilst Ward and Vicki both visited their mums for Mother's Day. Neil and Shane also have regular visits with family, whilst everyone else has regular phone calls.

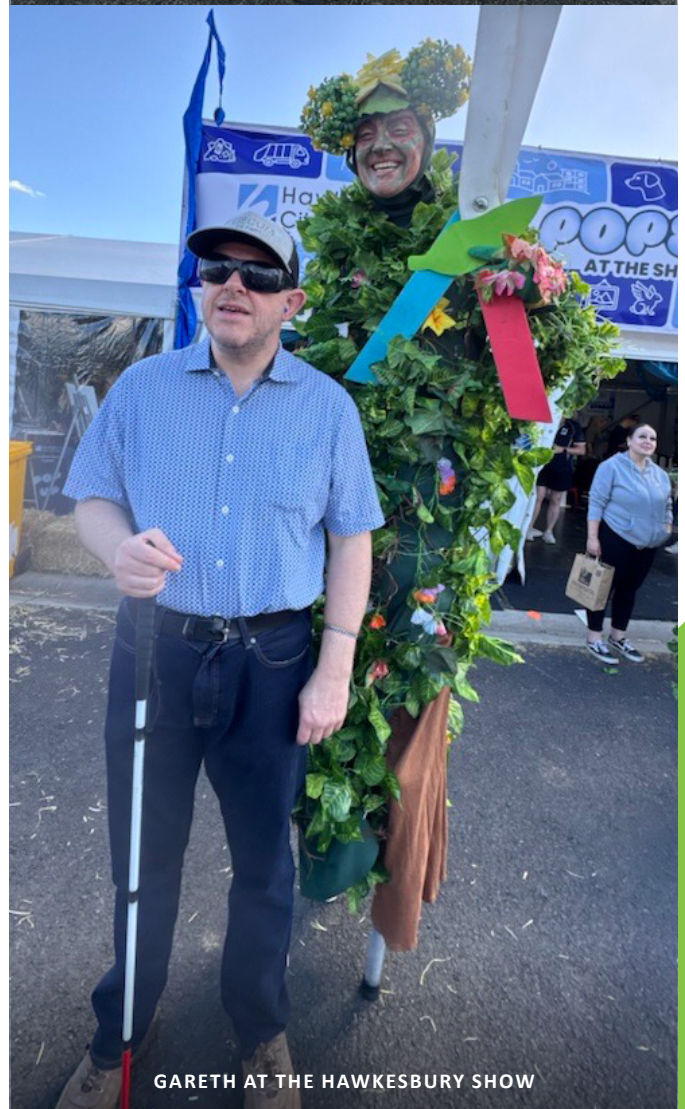
As we move forward, the focus remains on delivering high-quality, person-centred supports that empower residents to live fulfilling and meaningful lives within their homes and communities.



**Sam Clenton**  
Site Manager



SHANE AND HAZEL



GARETH AT THE HAWKESBURY SHOW



DENNIS PROUD OF HIS CATCH!

## 55 WINDSOR STREET

2026 has already been a meaningful and exciting year at New Haven Farm Home, with clients continuing to build confidence, develop independence and enjoy a wide range of community experiences and personal achievements.

Creating opportunities for connection, choice and engagement remains at the heart of what we do, and it has been wonderful to see clients embracing new experiences, strengthening routines and continuing to work towards their individual goals.

Community access and social participation have been a major focus throughout the year so far. Regular outings, social catchups and recreational activities have provided opportunities for clients to build confidence, maintain friendships and enjoy meaningful participation in the wider community. Favourite activities such as morning tea outings and Sunday Fun Days at the farm continue to bring enjoyment, routine and connection to everyday life.

We are incredibly proud of the progress and achievements our clients have made over recent months.

**Denis** has been enjoying fishing trips as part of his individual support time and recently celebrated the exciting achievement of catching a fish. He has also been showing great commitment towards reducing his smoking, demonstrating persistence and determination in working towards his personal health goals.

**Kyle** has had an exciting start to the year, attending multiple football games and recently joining a football team of his own. In an incredible achievement, he received Man of the Match during his very first game. Kyle has also started a new job and is independently travelling to and from work, a wonderful milestone in building confidence and independence.



**Pat** continues to flourish through the support of consistent routines and structured daily living, highlighting the importance of stability and personalised supports in promoting wellbeing.

**Keith** was recently recognised as Employee of the Month at his workplace, an achievement that reflects his dedication and strong work ethic. It has also been fantastic to see his confidence and social engagement continue to grow.

**Roy** continues to pursue his dream of meeting Karl Stefanovic, bringing enthusiasm and positivity to every conversation about his goal. (Who knows, channel 9 might get back to me one day!)

**Doug** has made significant progress in expressing his feelings and communicating openly, supporting stronger connections and greater self confidence.

**Ziggy** has continued developing his social and communication skills while also making excellent progress with horse riding, an activity he greatly enjoys.

**Ben** continues to bring curiosity and thoughtful conversation into each day, sharing his interests and knowledge with those around him.

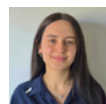
**Alvin** has remained highly engaged and motivated, consistently contributing creative ideas for activities and experiences during his time away from work.



These individual successes reflect the importance of person-centred supports, meaningful routines and opportunities for community participation. Every achievement, whether big or small, contributes to greater confidence, independence and quality of life.

We would also like to acknowledge the dedication of our staff team, whose ongoing commitment, compassion and support help create an environment where clients feel encouraged, valued and empowered to achieve their goals.

We look forward to continuing this positive momentum throughout the rest of 2026 and sharing more milestones and achievements along the way.



**Natasha Kallins**  
Acting Site Manager



READY FOR A DAY OUT TOGETHER

## 378 WINDSOR STREET

### AUTUMN VIBES & ANZAC SPIRIT AT 378

Autumn has officially arrived, bringing cooler days and a fresh sense of energy across 378. While the season has changed, the momentum certainly hasn't slowed down.

It's been a busy and rewarding time, filled with community connection, meaningful activities, and plenty of achievements to celebrate.



JOE, TONY AND GRACE

### LIFE AT 378 – STAYING ACTIVE AND ENGAGED

Across the week, everyone has continued to thrive in their routines and activities:

- Joe has stepped up by picking up an extra day at Thorndale, showing great commitment and enthusiasm
- John continues to enjoy his Tuesday 1:1 with relaxing time in the hydro pool
- Percy remains a superstar in the kitchen, cooking up delicious creations (while the Tuesday night lotto jackpot still just eludes him!)
- Ali continues to bring great energy, keeping everything running smoothly day to day

Each person continues to engage in activities that support independence, confidence, and enjoyment.

## ANZAC WEEK HIGHLIGHTS

In the lead-up to Anzac Day, 378 had a meaningful and creative week of participation and teamwork.

Everyone got involved in baking their own batches of Anzac biscuits. With encouragement and support from staff, individuals demonstrated great enthusiasm, independence, and pride in their work.

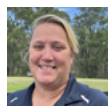
The results were truly impressive — and delicious!

On Anzac Day, the biscuits were carefully packaged with a sprig of rosemary and delivered across all sites. This thoughtful gesture created a shared moment of reflection and connection for both clients and staff.

A simple activity turned into a meaningful way to honour the day while celebrating teamwork, participation, and achievement.

The last few months have been filled with connection, creativity, and meaningful participation. From everyday achievements to special Anzac Week activities, there is much to be proud of across 378.

We look forward to continuing this momentum into the weeks ahead



**Tina Powell**  
House Manager



JOE AND ALISTAIR DELIVING ANZAC BISCUITS



# SPOTLIGHT ON TONY

Tony is a relaxed, friendly individual who enjoys spending time with both staff and peers. He is always happy to engage socially and participate in his community.

## WEEKLY ROUTINE & ACTIVITIES

- Tuesday: Tony attends a 1:1 support session at Fitness Embassy with Chris, where he focuses on fitness and wellbeing. He also completes banking and often enjoys lunch outings.
- Wednesday & Friday: Attendance at Thorndale Day Program.
- Saturday: Bowling league at South Windsor Bowling Club with housemates.
- Sunday: Community outings such as city visits, museum trips, mountain picnics, or bingo and karaoke at the farm.

## AT HOME

At home, Tony enjoys organising his personal belongings in his preferred way and takes pride in packing them away at bedtime. He enjoys a variety of activities including drawing, painting, cooking, watching TV, and relaxing.

Tony also enjoys being outdoors, taking part in walks to Pugh's Lagoon, crafts, and outdoor games with staff support.

Tony can clearly communicate his preferences and will let staff know if he does not wish to participate in an activity.





## IN LOVING MEMORY OF CHARLIE "UNCLE CHARLIE" CARUANA

As a long-standing Director of Newhaven Farm, Charlie helped guide the significant redevelopment of Newhaven Farm, leaving a lasting impact on our homes, our community, and the lives of those we support.

Beyond his role and well into his retirement from the board, Charlie's kindness, genuine care and unwavering support for both individuals and the wider community will never be forgotten.

**Rest peacefully, Uncle Charlie.**

## EMPLOYEE OF THE QUARTER MASINA VAKAVELO



94 Reserve Road, Freemans Reach  
NSW 2756 • PO BOX 3202



(02) 4579 6131



[info@newhavenfarm.org.au](mailto:info@newhavenfarm.org.au)



[newhavenfarm.org.au](http://newhavenfarm.org.au)

ABN: 24 001 329 871